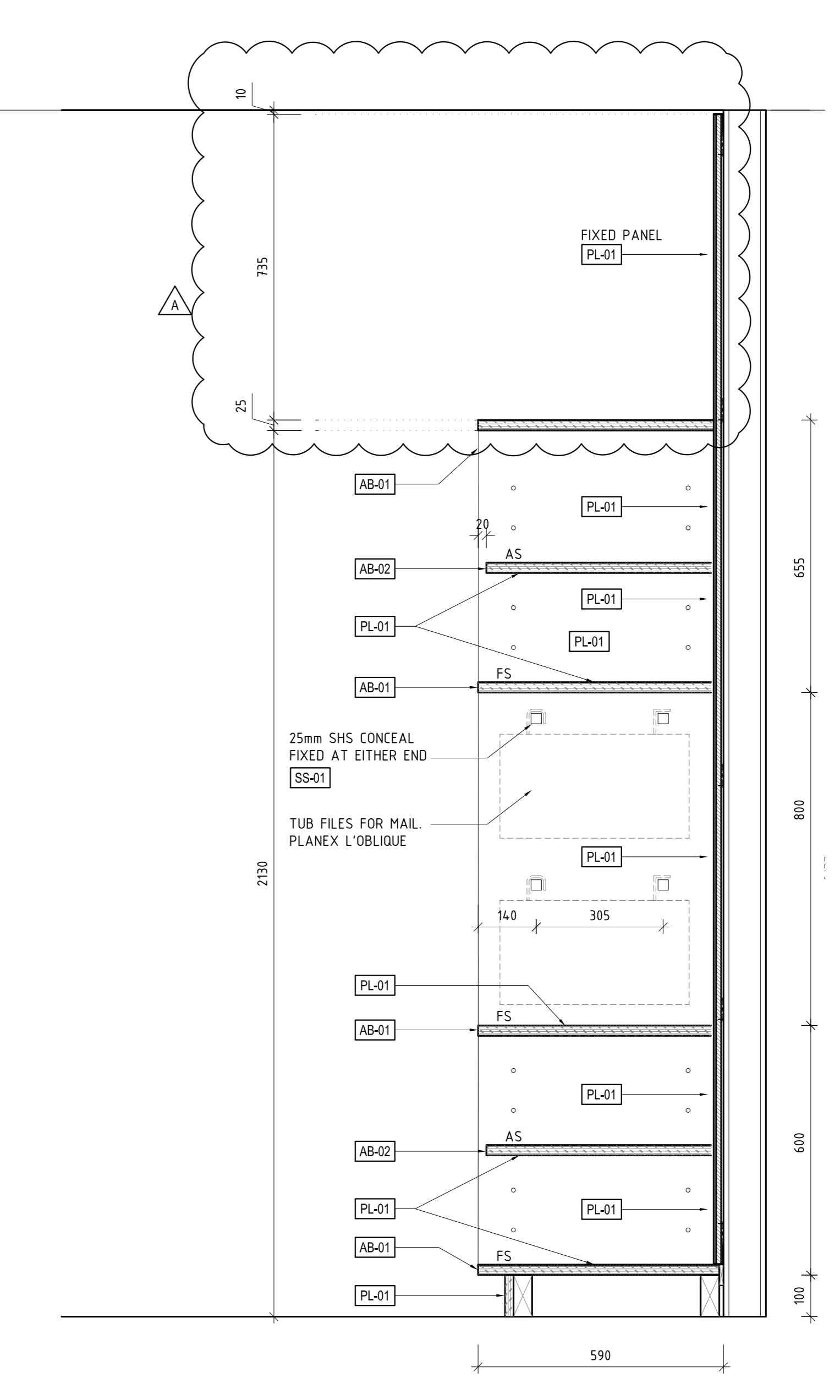
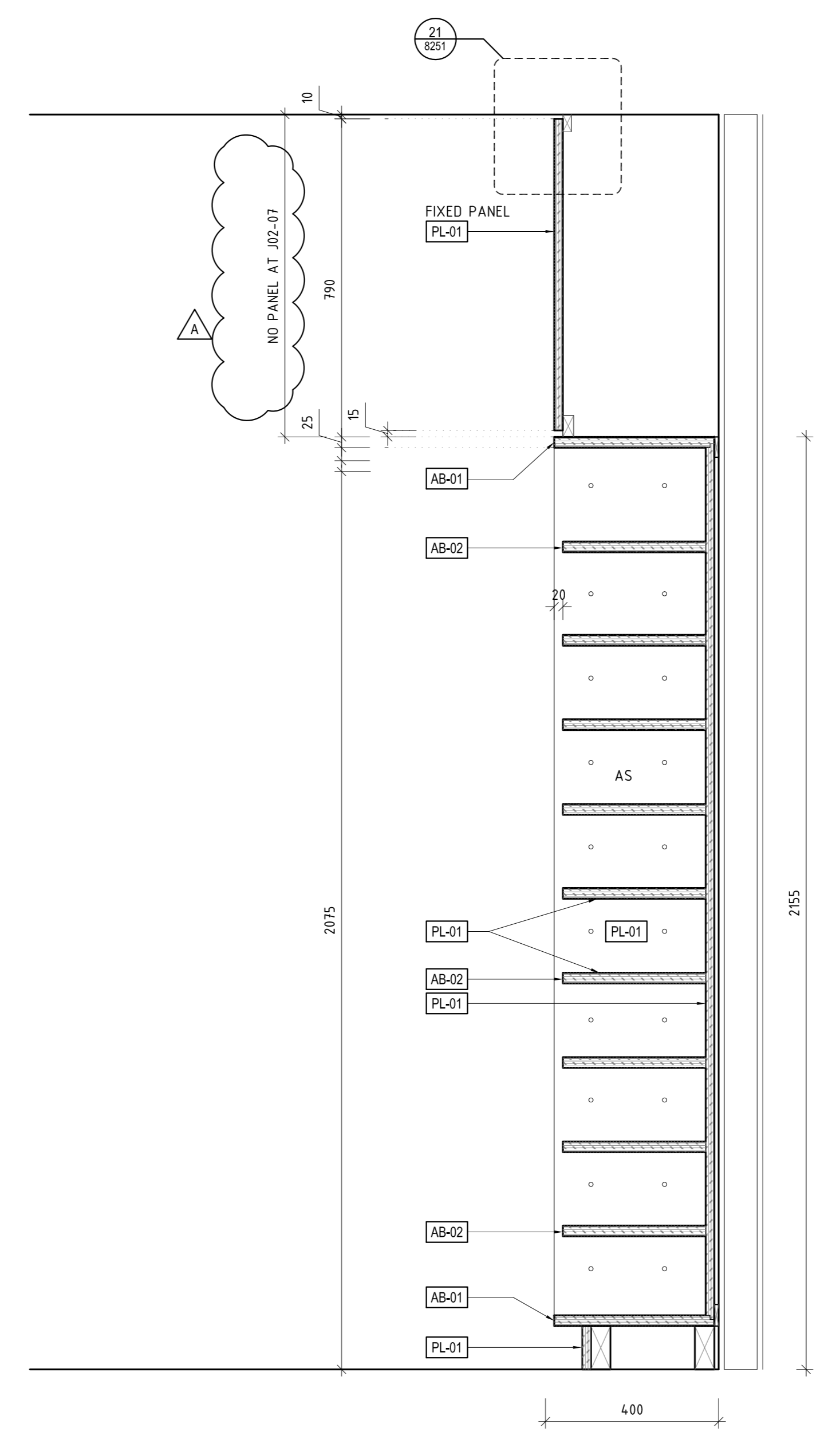
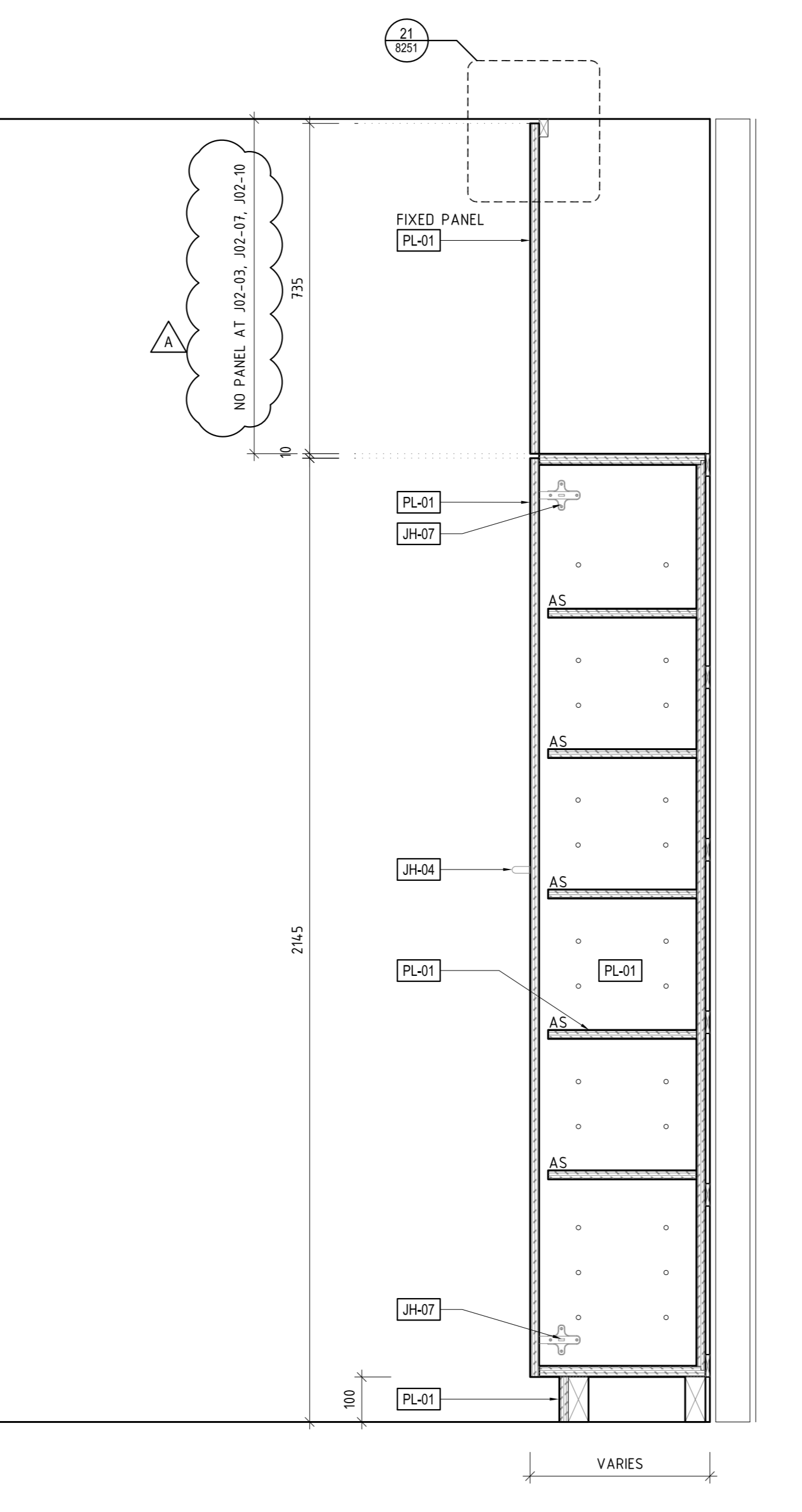
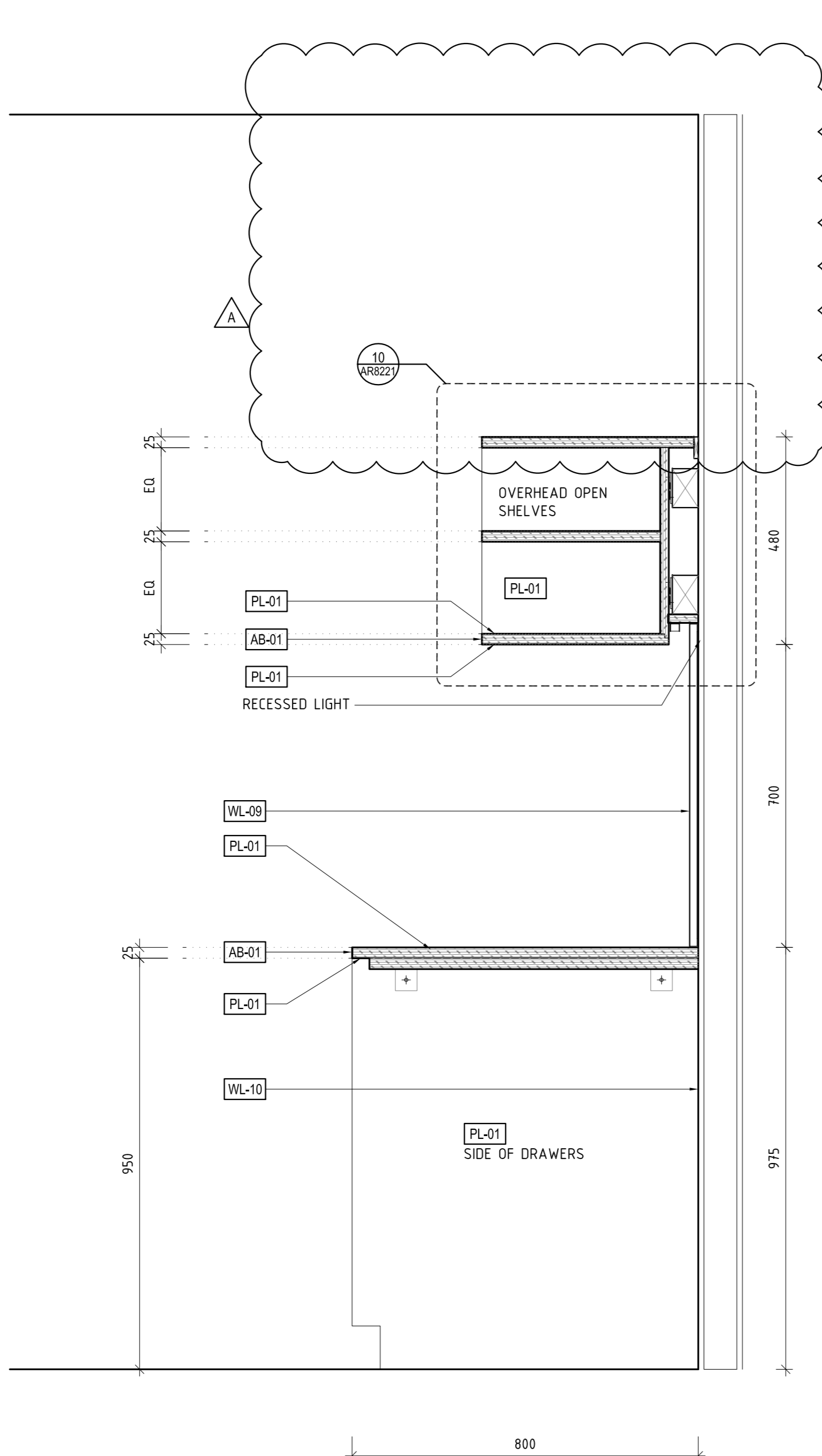
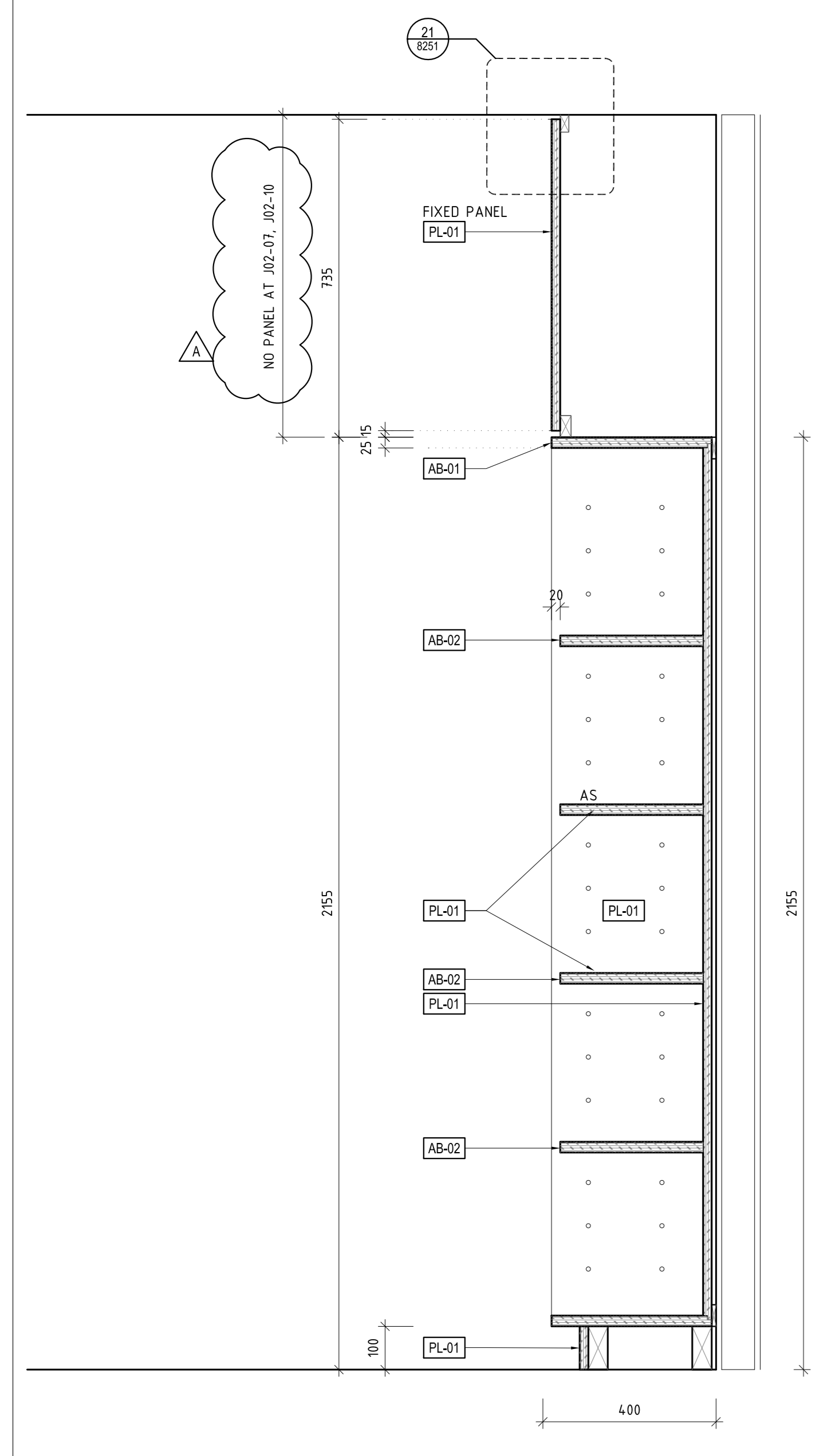


THIS DRAWING IS AN UNCONTROLLED COPY UNLESS STAMPED OTHERWISE

CONTRACTORS SHALL VERIFY DIMENSIONS BEFORE ANY WORK COMMENCES. ALL SHOP DRAWINGS SHALL BE SUBMITTED TO THE SUPERINTENDENT AND MANUFACTURE SHALL NOT COMMENCE PRIOR TO THE RETURN OF SHOP DRAWINGS SIGNED BY THE CONSULTANT. FEARED DIMENSIONS SHALL TAKE PRECEDENCE OVER SCALED. THIS DRAWING SHOULD BE READ IN CONJUNCTION WITH ALL RELEVANT CONTRACT SPECIFICATIONS AND DRAWINGS COPYRIGHT OF THIS DRAWING IS VESTED IN WARDLE

General Notes ALL JOINERY TO REFER TO INTERIOR ELEVATIONS (AR1200 SERIES)

- 18mm E1 MDF CARCASS THROUGHOUT UNLESS OTHERWISE NOTED.
- ALL NON EXPOSED CARCASS TO BE MATCHING LAMINATE UNLESS OTHERWISE NOTED.
- ALL NON EXPOSED CARCASS TO BE BLACK LAMINATE TO JOINERY RECEIVING TIMBER VENEER FINISH. REFER MATERIALS SCHEDULE [PL-05]
- ALL NON EXPOSED CARCASS TO BE WHITE LAMINATE TO JOINERY RECEIVING STAINLESS STEEL CLADDING. REFER MATERIALS SCHEDULE [PL-01]
- ALL EXPOSED EDGES TO TIMBER VENEER PANELS TO RECEIVE 3mm THK MATCHING SOLID EDGES UNLESS OTHERWISE NOTED.
- SPLIT BATTENS TO BE 12mm UNLESS OTHERWISE NOTED.
- APPLY MATCHING LAMINATE ABS EDGING TO LAMINATED BENCHTOPS UNLESS OTHERWISE NOTED.
- REFER TO '1300 - MATERIALS SCHEDULE' FOR A DESCRIPTION OF THE MATERIAL CODES AS SHOWN ON THIS DRAWING. [TV-00]
- REFER TO '1400 - FIXTURES, FITTINGS & EQUIPMENT SCHEDULE' FOR A DESCRIPTION OF THE FF&E CODES AS SHOWN ON THIS DRAWING. [LCH-00]
- ALL JOINERY LOCKS TO BE [JH-02] UNLESS OTHERWISE NOTED.
- REFER TO DRAWING AR7300 FOR MOUNTING HEIGHTS FOR ALL SERVICES FIXTURES UNLESS OTHERWISE DIMENSIONED ON THE JOINERY ELEVATIONS.
- ALL CORNER JUNCTIONS TO BE MITRED UNLESS OTHERWISE NOTED.
- ALL UPHOLSTERY STITCHING TOO MATCH FABRIC COLOUR UNLESS OTHERWISE NOTED.
- DRAWINGS TO BE READ IN CONJUNCTION WITH AR1200 SERIES INTERNAL ARRANGEMENT PLANS TO COORDINATE FIXINGS INTO PARTITIONS WHERE NECESSARY.
- FS = FIXED SHELF
- AS = ADJUSTABLE SHELF
- FP = FIXED PANEL
- PJ = PANEL JOIN, MAXIMUM WIDTH 2mm
- C.O.S = CHECK ON SITE - DIMENSIONS MUST BE VERIFIED ON SITE BY CONTRACTOR PRIOR TO COMMENCEMENT OF CONSTRUCTION.
- NOM = NOMINAL
- TYP = TYPICAL
- SIM = SIMILAR
- MIRR = MIRROR
- FCL = FINISHED CEILING LEVEL
- FFL = FINISHED FLOOR LEVEL
- SSL = STRUCTURAL SLAB LEVEL
- C = CENTRELINE
- ↗ = DIRECTION OF GRAIN / LINSH



10 MAIL/STATIONARY ROOM
J02-07-SECTION
SCALE 1:10
J02-10 SIMILAR
J03-24 SIMILAR

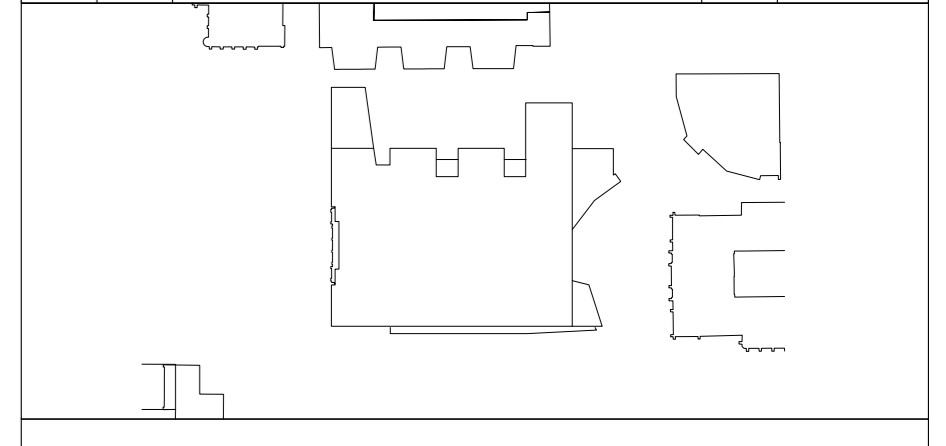
09 IT STORE
J02-05-SECTION
SCALE 1:10

08 MAIL/STATIONARY ROOM
J02-07-SECTION
SCALE 1:10
J02-03 SIMILAR
J02-19 SIMILAR
J02-16 SIMILAR
J03-04 SIMILAR
J04-15 SIMILAR

07 MAIL/STATIONARY ROOM
J02-07-SECTION
SCALE 1:10
J03-24 SIMILAR

06 J02-06-SECTION
SCALE 1:10

Rev	Issue	Revision Description	Amd	Date
A	SG	CONSTRUCTION ISSUE	-	19.12.13
04	SG	TENDER ISSUE	-	14.08.13
03	JC	100% CD - TENDER ISSUE	-	07.09.12
02	JC	90% CD ISSUE	-	10.08.12
01	JC	75% CD ISSUE	-	13.07.12



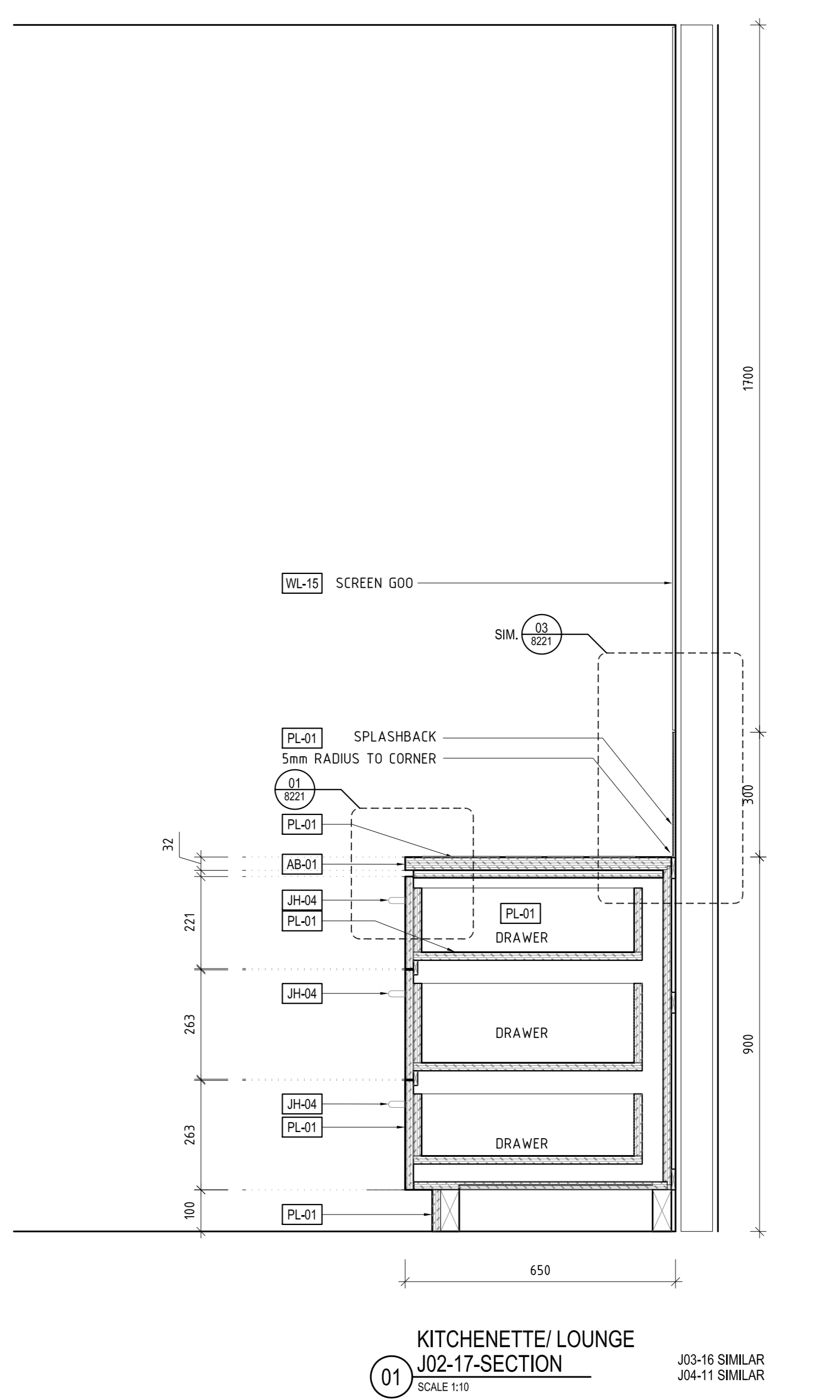
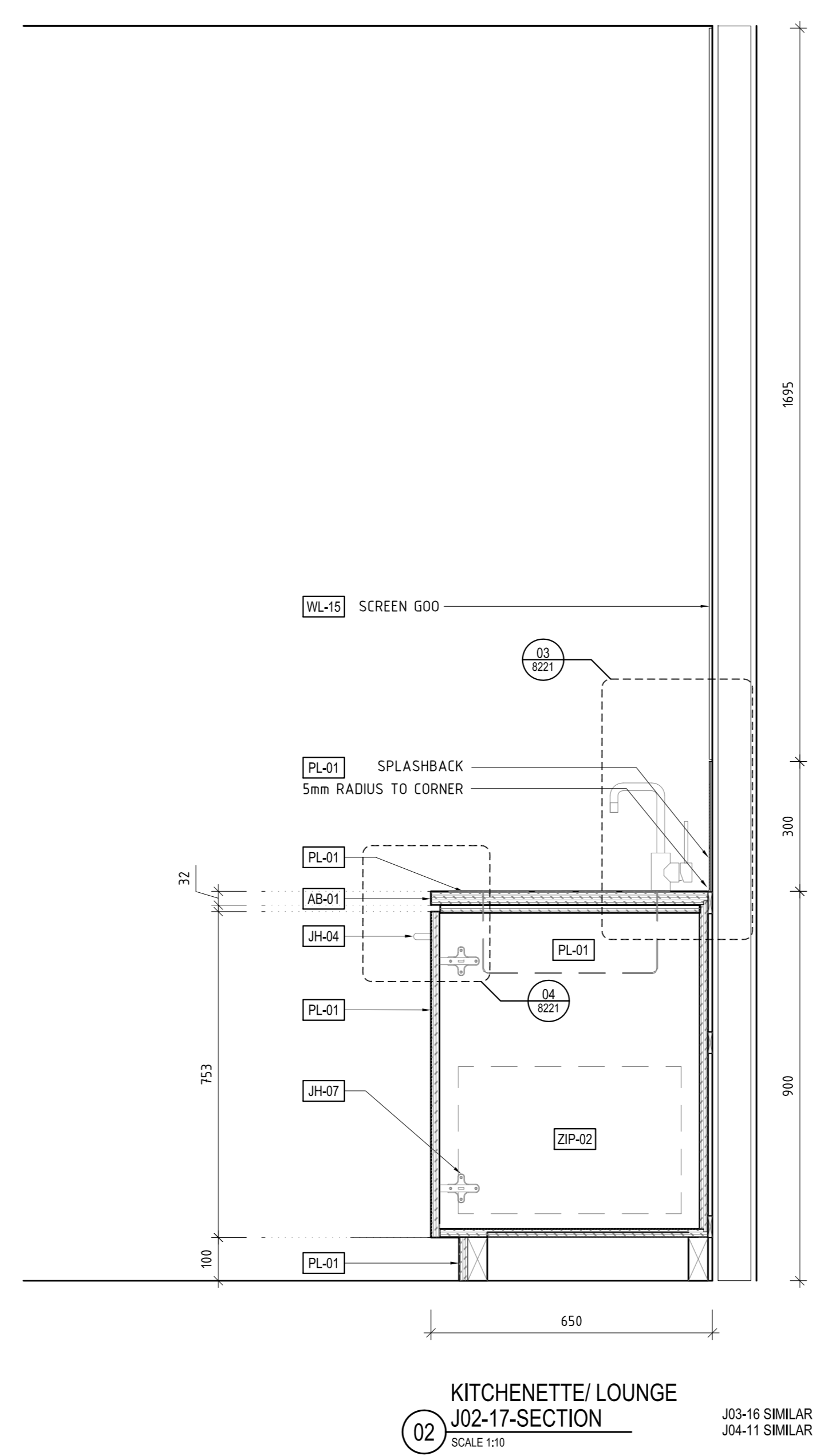
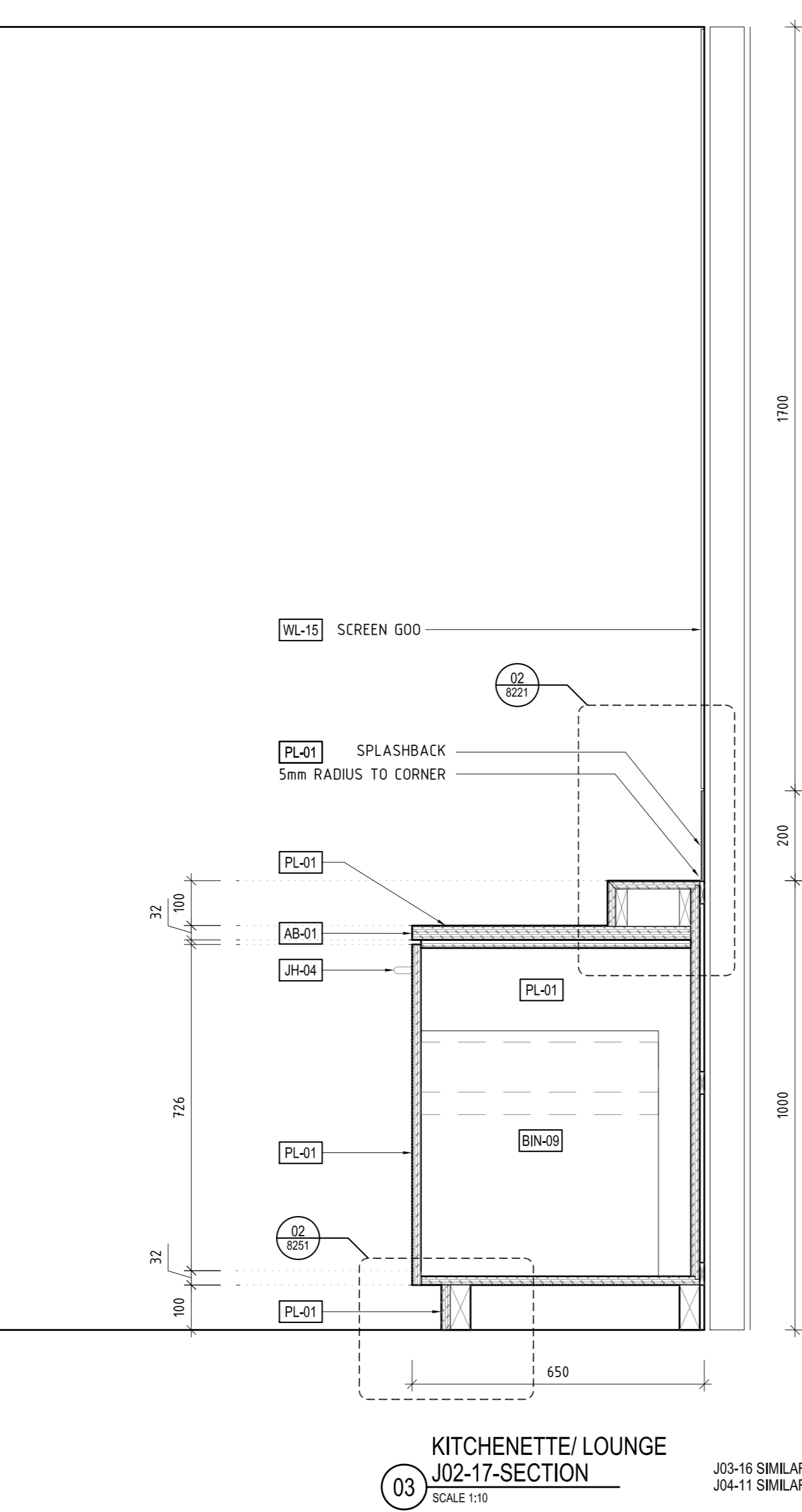
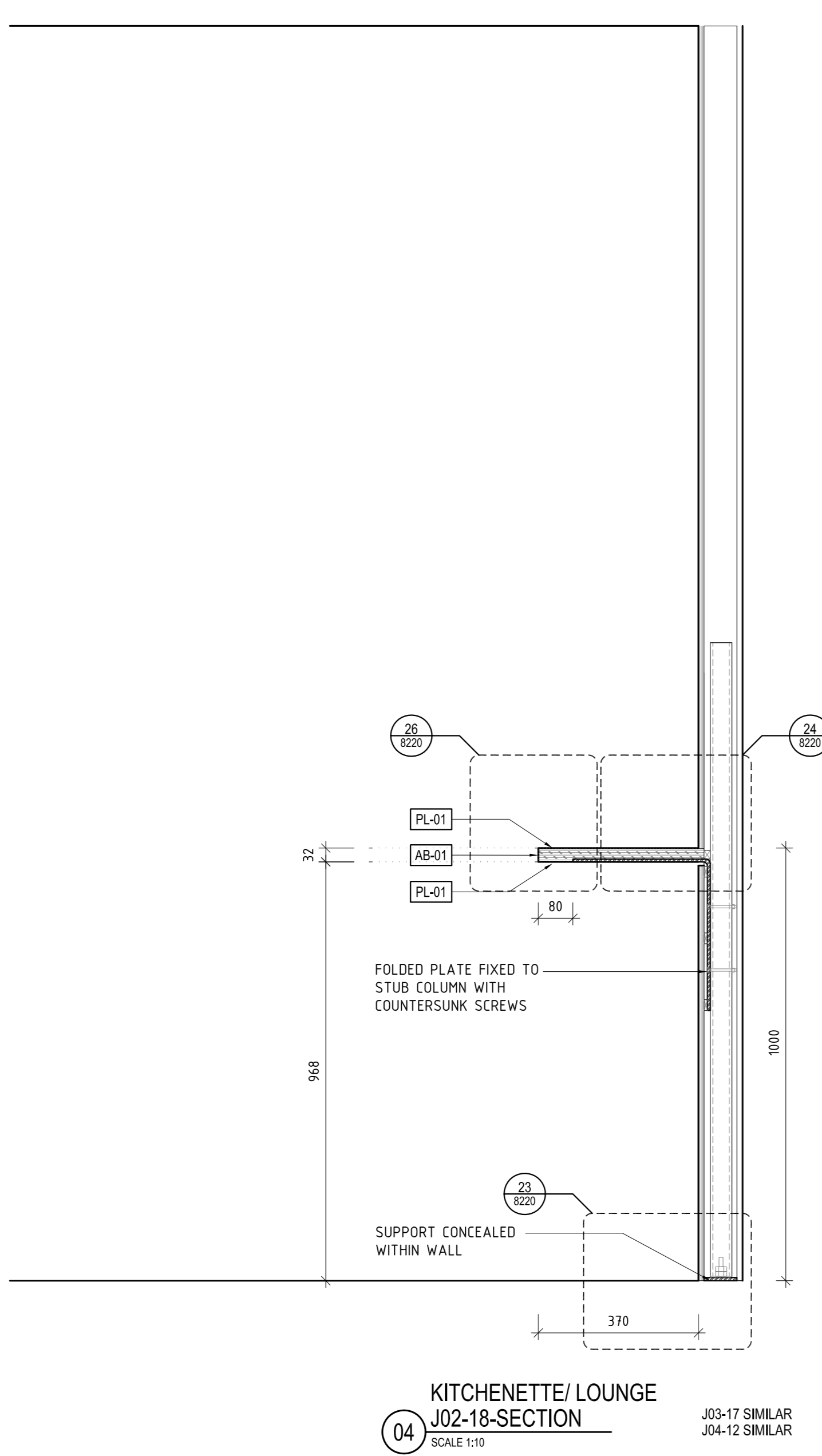
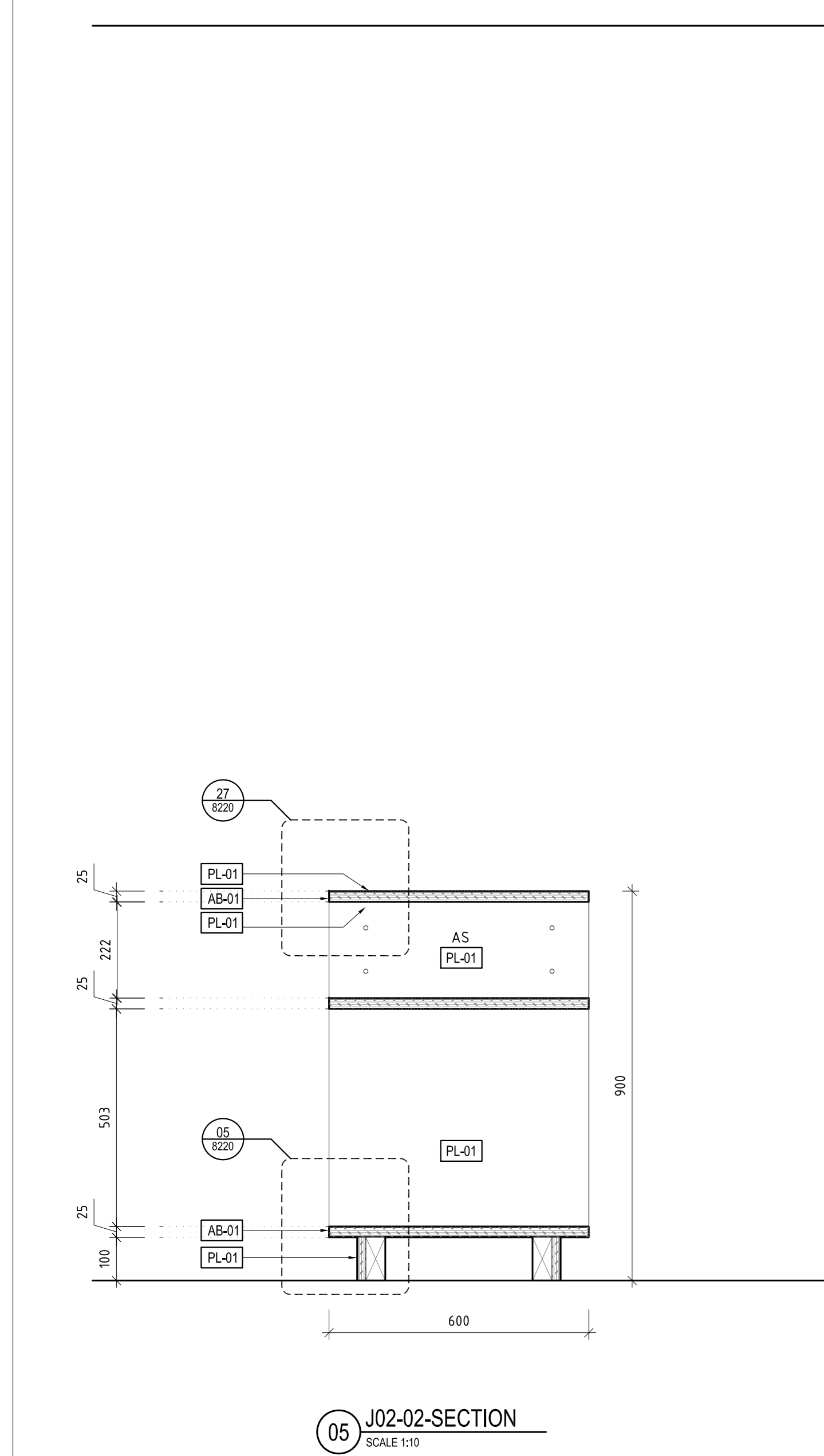
NADAAA
 NADAAA
 1320 Washington Street No.2
 Boston Massachusetts 02118 USA
 Telephone: +1 617 442 8232
 Facsimile: +1 617 442 1417
 Email: nada@nadaaa.com

John Wardle Architects
 © 2011 John Wardle Architects
 Level 10, 180 Russell Street, Melbourne Victoria 3000 Australia
 Tel: +613 9654 8700 www.johnwardlearchitects.com

Client: University of Melbourne
 Parkville Campus
 Project: Faculty of Architecture
 Building and Planning
 Title: JOINERY DETAILS
 L02

Project No.	0913	Scale	1:10 @ A0
Drawing No.	AR8201	Revision	A
Date	DEC 2013	Dwn	-
Co-Ord	-	Check	-

FOR CONSTRUCTION



05 J02-02-SECTION
SCALE 1:10

04 KITCHENETTE/ LOUNGE
J02-18-SECTION
SCALE 1:10
J03-17 SIMILAR
J04-11 SIMILAR

03 KITCHENETTE/ LOUNGE
J02-17-SECTION
SCALE 1:10
J03-16 SIMILAR
J04-11 SIMILAR

02 KITCHENETTE/ LOUNGE
J02-17-SECTION
SCALE 1:10
J03-16 SIMILAR
J04-11 SIMILAR

01 KITCHENETTE/ LOUNGE
J02-17-SECTION
SCALE 1:10
J03-16 SIMILAR
J04-11 SIMILAR